

WARD

SIMPLER RECYCLING

Are you ready for March 2025?



WARD.COM

WHAT'S HAPPENING?

From **31st March 2025** onwards, new **'Simpler Recycling'** legislation will require businesses to follow new recycling practices to simplify recycling nationwide.

What is Simpler Recycling?

The Department for Environment, Food & Rural Affairs (DEFRA) consulted on the planned Simpler Recycling in 2023 publishing the consultation finding earlier this year, stating that “reform to the recycling system which means that people across England will be able to recycle the same materials, whether at home, work or school, putting an end to the confusion over what can and cannot be recycled in different parts of the country.”

Which businesses does Simpler Recycling apply to?

Depending on their size and type of activities, some businesses will be affected sooner than others with Simpler Recycling.

By 31 March 2025, businesses and relevant non-domestic premises in England will need to arrange for the collection of the core recyclable waste streams (glass, metal, plastic, paper and card, and food waste), with the exception of garden waste.

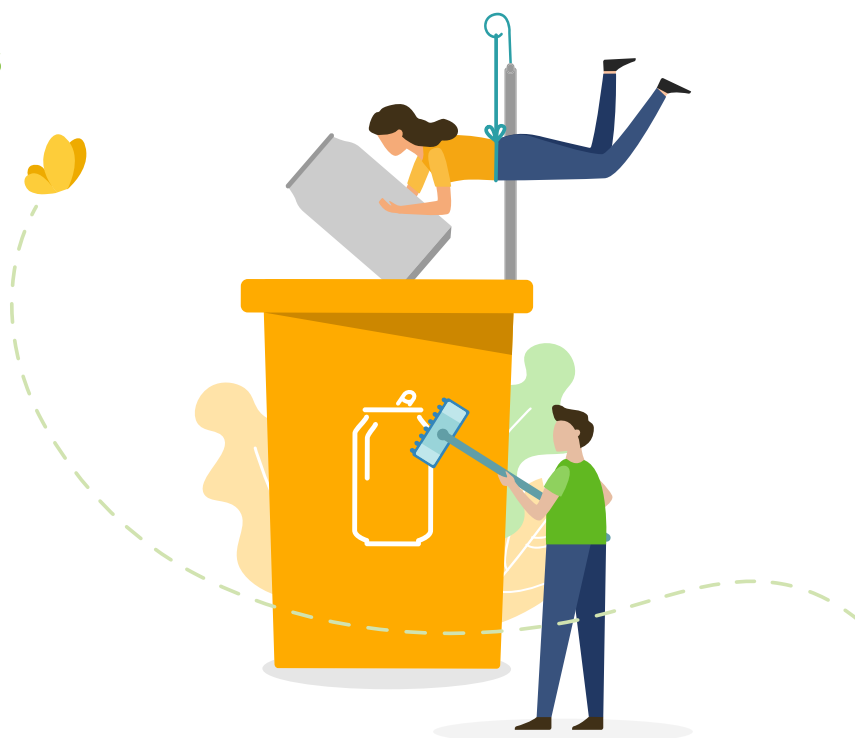
Micro-firms (businesses with fewer than 10 full-time equivalent employees) will be temporarily exempt from this requirement. They will have until 31 March 2027 to arrange for recycling of core recyclable waste streams. As a wider sustainability measure it would be beneficial to implement in advance of legislation, where possible.

What are the requirements of Simpler Recycling?

The new default requirement for workplaces, released in November 2024, states that four containers will be required for collecting and recycling:

- residual (non-recyclable) waste
- food waste (mixed with garden waste if appropriate)
- paper and card
- all other dry recyclable materials (plastic, metal and glass)

These may be various container types, including bags, bins or stackable boxes.



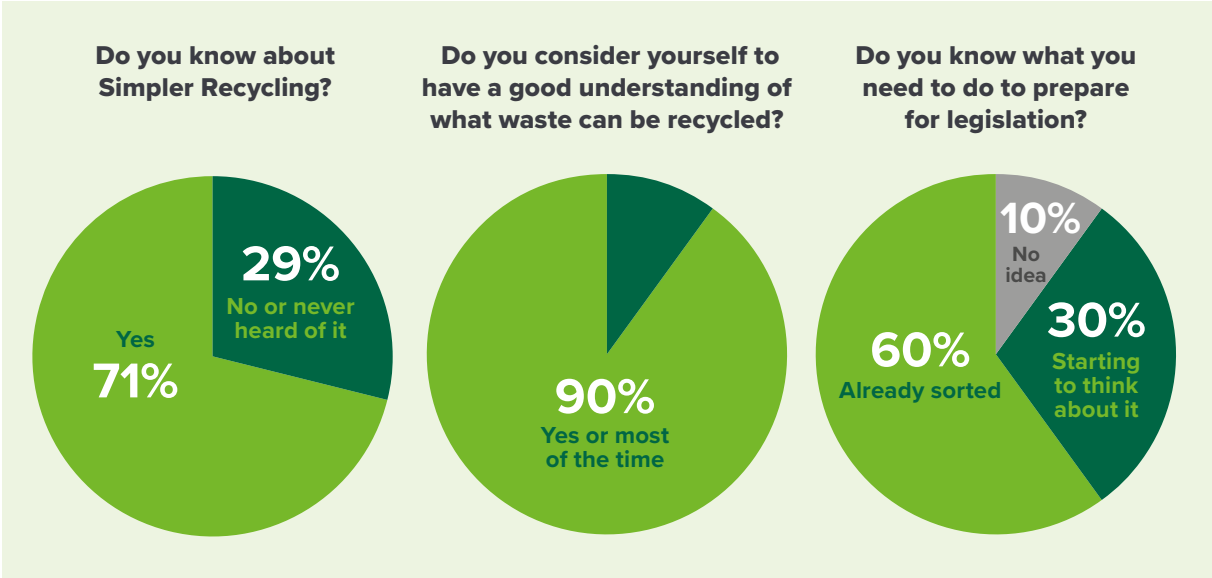
WHAT DO YOU KNOW?

In Autumn 2024, Ward ran a survey designed to find out what people knew about the new legislation and what support businesses needed to help implement the new requirements.

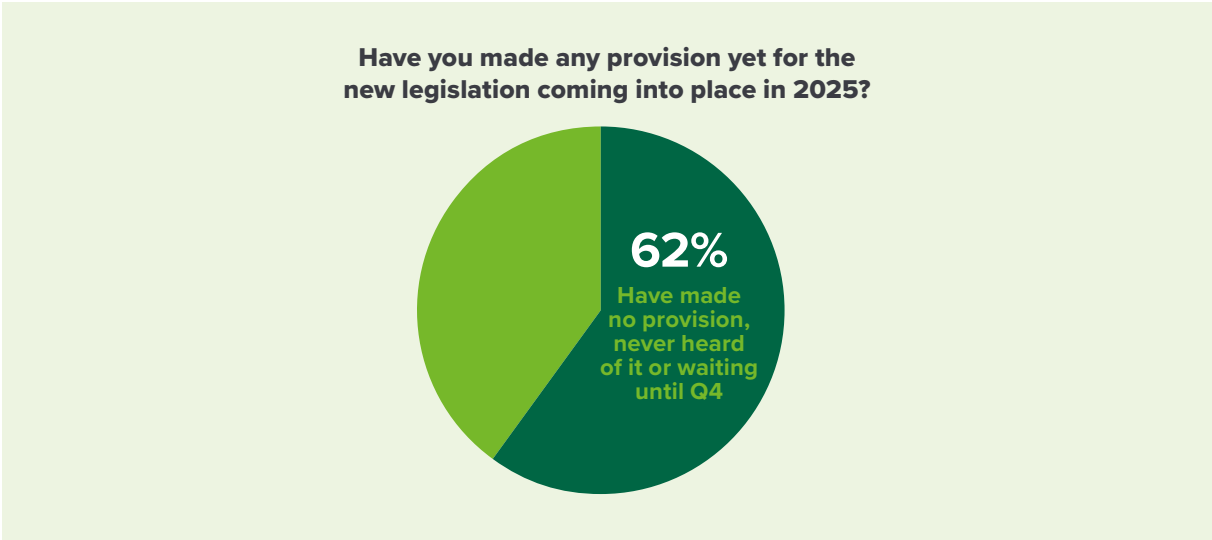
More than 200 individuals and businesses responded, sharing insights that covered a range of waste management topics including Simpler Recycling legislation, barriers to recycling, difficult to recycle materials and digital waste tracking and reporting.



Encouragingly, 71% of respondents knew about the Simpler Recycling legislation, 90% felt they had good knowledge of what was required and 60% felt that they knew what they needed to do to prepare.



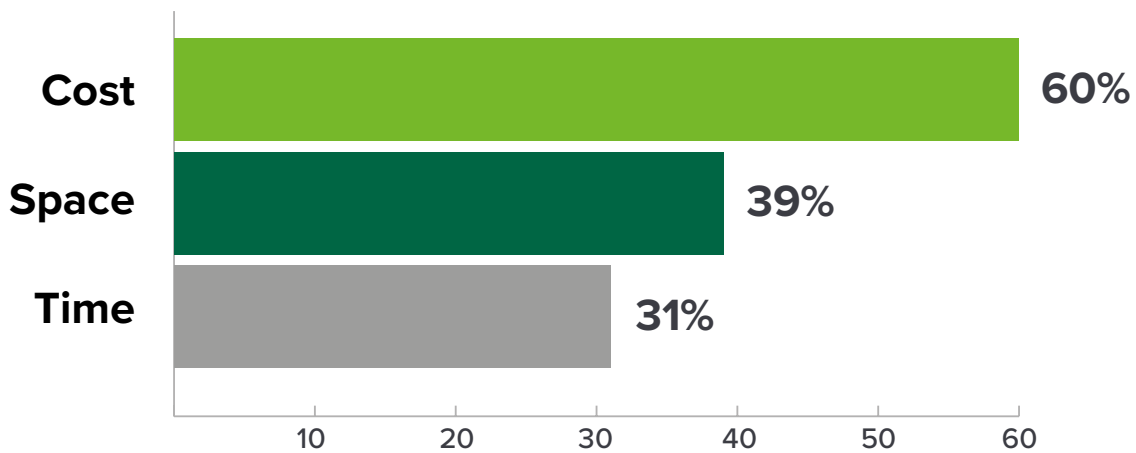
However, 62% of respondents had yet made no provision at all for the new legislation.



MAIN BARRIERS TO RECYCLING

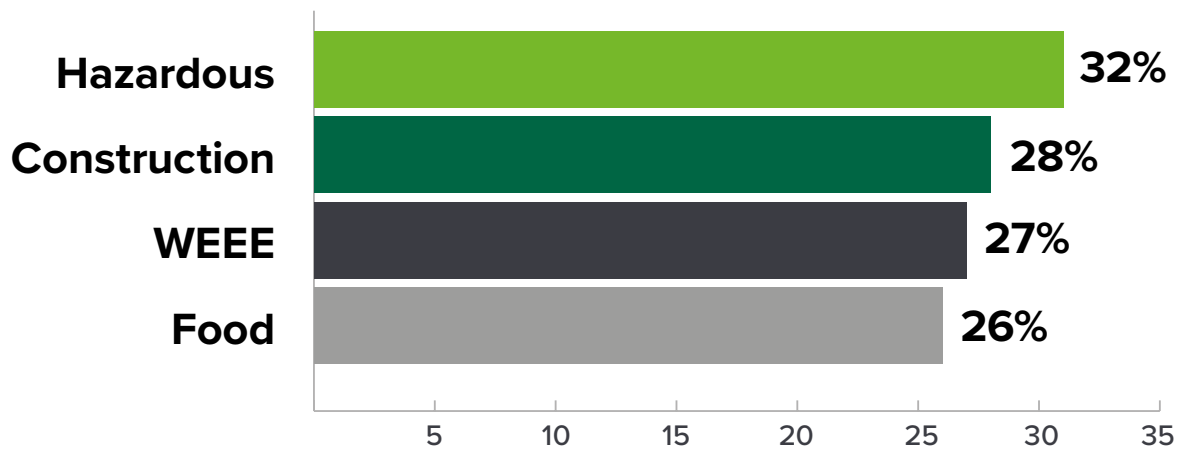
As much as there is positive intention to simplify waste streams, improve recycling effectiveness and reduce waste to landfill, there are some practical considerations to businesses to adopting these measures.

When asked ‘What are the main barriers to recycling in your business?’, the top concern from the survey was cost, with 60% of respondents naming this as a main barrier. A further 39% said space constraints and 31% cited lack of time as other main factors that prevent them from segregating and recycling waste.”



MOST DIFFICULT TO RECYCLE MATERIALS

Respondents also shared that some types of waste were more problematic than others to recycle. Hazardous material was considered most difficult by 32%, closely followed by construction waste at 28%, Waste Electrical and Electronic Equipment (WEEE) at 27% and food waste at 26%.

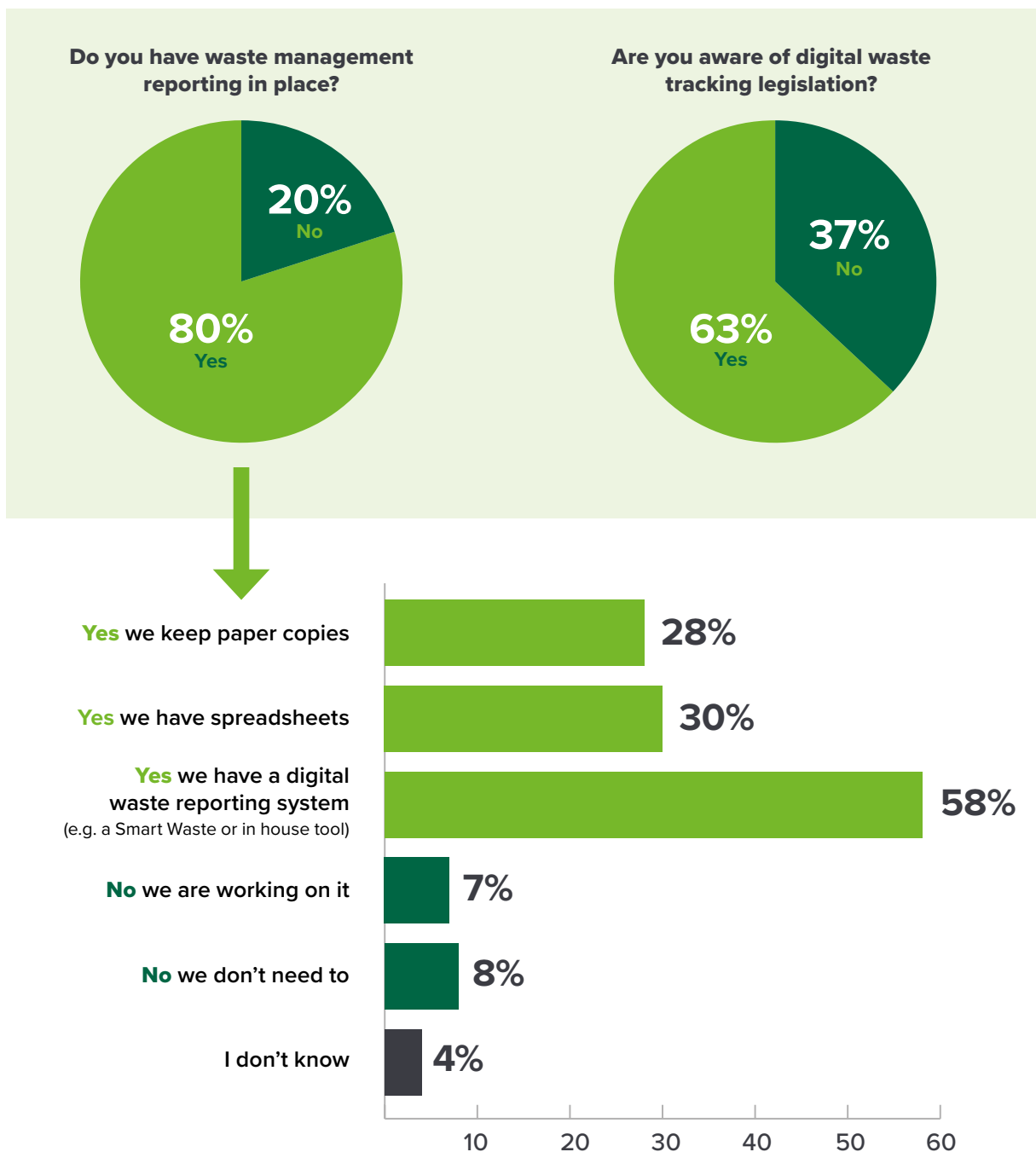


DIGITAL WASTE TRACKING

The survey also looked at other elements of waste management, including digital waste tracking.

In addition to Simpler Recycling, as part of the government’s Resources and Waste Strategy for England, mandatory digital waste tracking will also be introduced from April 2025. This is designed to provide a comprehensive way to see what is happening to the waste produced in the UK. It is intended to support more effective waste regulation and help businesses comply with their duty of care regarding waste.

Almost 40% of respondents were not aware of digital waste tracking legislation. However, 80% of survey respondents stated they had waste reporting in place, with 58% already using a digital waste reporting system (such as Smart Waste or an in-house tool).



HOW CAN WARD SUPPORT YOU?

There are many ways businesses can increase recycling rates, prepare for Simpler Recycling regulation and tackle some of the challenges highlighted in the survey, such as cost, space and time.

A free waste audit

A free and simple waste audit can quickly assess the volume and type of waste. From there, you work out a plan of the required container sizes and optimise collections to achieve the best value for money. [Click to find out more.](#)

Get clever with containers

By combining different container sizes and using flexible collections, Ward can help maximise space and reduce costs.

We can simplify collections into three containers in most workplaces, due to the processing on of the recyclables, therefore offering options for:

- Residual (non-recyclable) waste
- Food waste (mixed with garden waste if appropriate)
- Dry mixed recycling (DMR) - paper and card and all other dry recyclable materials (plastic, metal and glass)

With options including bags, wheelie bins, Front End Loaders (FELs), Skips and Roll On/Offs there's solutions to meet all recycling requirements. [Click to find out more](#)

Difficult to recycle materials

From one off asbestos removal to complete construction or hazardous waste collections, we have a dedicated team in place to help you identify, analyse and manage complex waste types. Contact us at: hazardous@ward.com

Complete waste management and recycling solutions

We offer site visits for all businesses to help set up effective recycling areas and provide an online portal for digital waste tracking and carbon emission reporting. This provides a good way to monitor and evaluate different waste streams, using the data to make more informed decisions about recycling rates, monitor activity and make regular improvements and adjustments to waste collections.

Contact us for more details at: simplerrecycling@ward.com



Read more on Simpler Recycling

As a tool to share information and raise awareness among your teams, we've pulled together a handy guide to Simpler Recycling. [Click to find out more.](#)



NEXT STEPS...

To increase your recycling rates and get prepared for Simpler Recycling regulation, visit our Simpler Recycling page or contact a member of our team.

simplerrecycling@ward.com

0345 337 0000

[Visit Simpler Recycling](#)

WARD

simplerrecycling@ward.com
0345 337 0000 | ward.com

